

Dramatic arts as a teaching and learning tool to promote mental health

SARAH HILES, Georgia Davies, Gavin Hazel

Dr Sarah Hiles
Senior Project Officer
Response Ability Teacher Education Initiative
Hunter Institute of Mental Health
Sarah.Hiles@hnehealth.nsw.gov.au



hunter institute
of mental health



Australian Government
Department of Health



What is mental health?

“...a state of well-being in which the individual realizes his or her own abilities, can cope with the normal stresses of life, can work productively and fruitfully, and is able to make a contribution to his or her community.”

(WHO, 2004, p. 12)

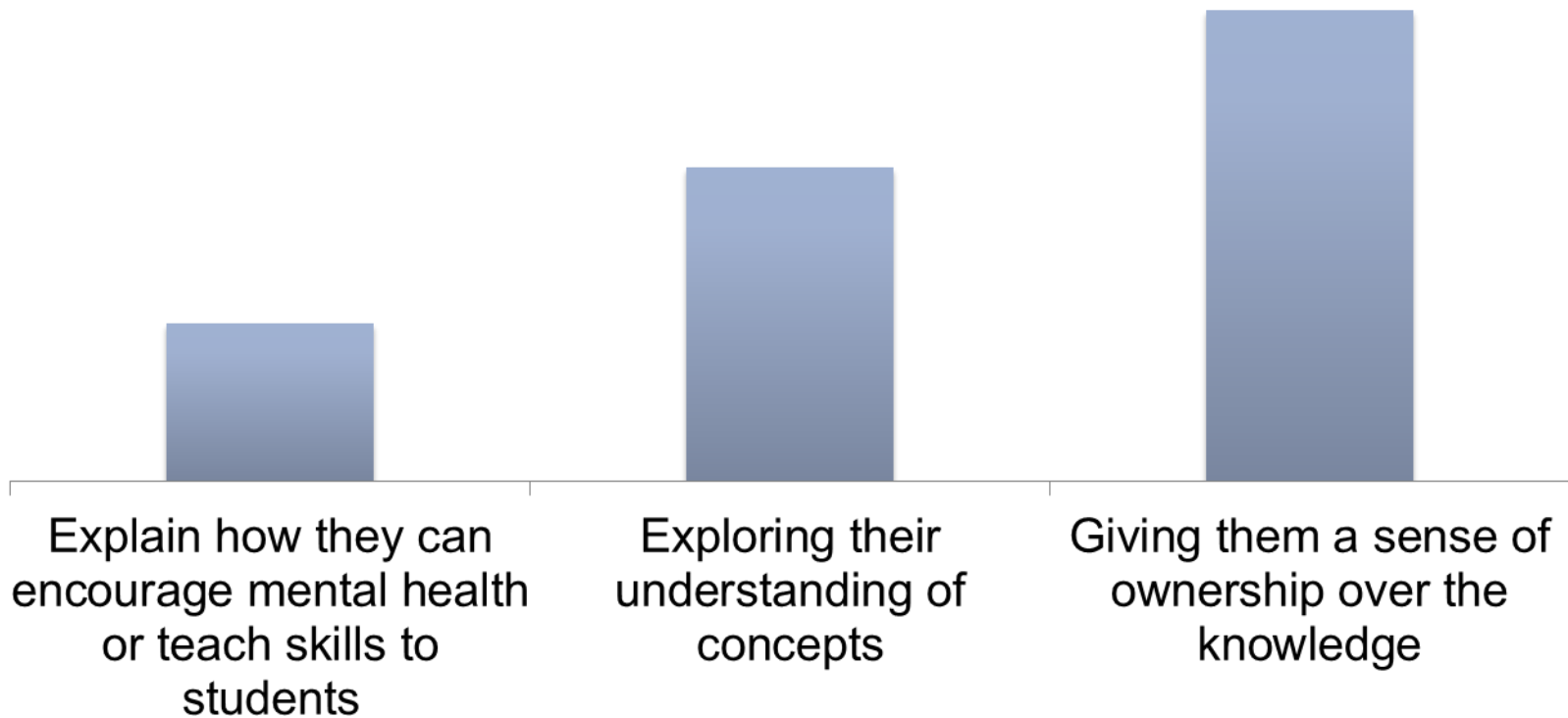
- Mental health
 - = positive capacity
 - = social and emotional wellbeing
 - = behaviour, thoughts and emotions
 - ≠ **mental ill-health**

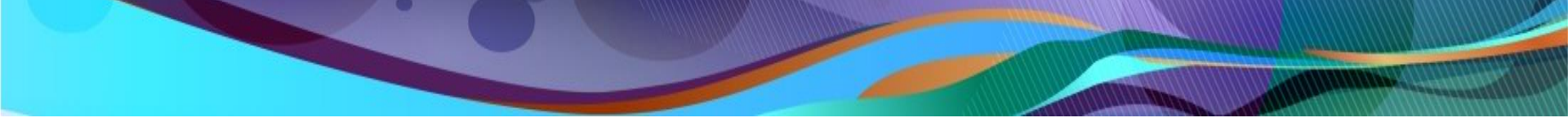
...spectrum of problems that interfere with an individual's cognitive, social and emotional abilities including both 'mental health problems' and 'mental illnesses'

Teaching mental health and mental ill-health

- It is important: best response for mental ill-health is evidence-based promotion, prevention and early intervention
- Can be difficult
 - Size (crowded curriculum)
 - Safety, sensitivity
 - Sensationalism, shock

Mental health with teaching professionals





So starting with that first part...

... encouraging mental health, creating mental ill-health awareness
and teaching mental health skills in school students?

MindPlay drama competition



- Est. 1997
- Hunter Institute of Mental Health
(in 2014, partnered with headspace)
- **Aims:**
 - Awareness of mental illness
 - Awareness of mental health and help-seeking
 - Creativity and connection

MindPlay drama competition



Year 11 students, Hunter region



Script writing workshop



Research and write 10-15 minute drama piece on mental health related topic



Audition



Grand Final

www.himh.org.au/home/our-programs/community-media-and-arts-program/mindplay



MindPlay drama competition



- Evaluations – positive experience and powerful learning experience
 - for students and audience

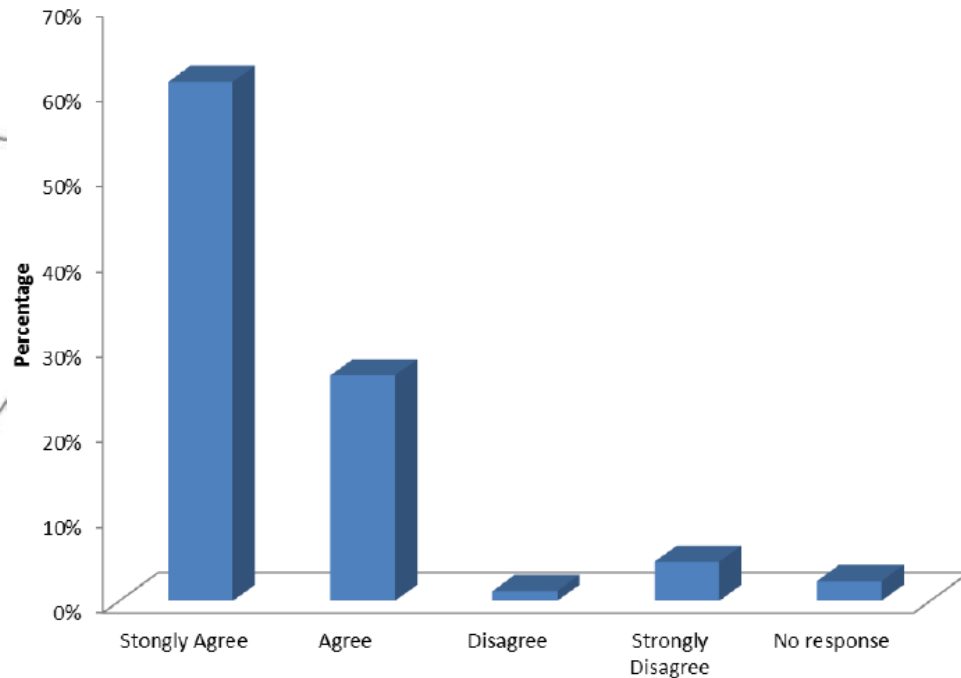
What does MindPlay mean to you?

- Themes in student focus groups:
 - Impact on family
 - Awareness
 - Disseminate information

MindPlay drama competition



- Evaluations – positive experience and powerful learning experience
 - for students and audience

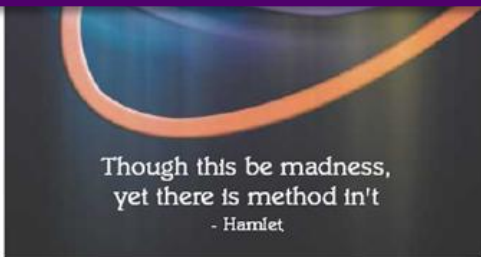


MindPlay provides opportunity to learn about mental health and mental illness

MindPlay drama competition



For these reasons,
Response Ability
includes filmed
MindPlay drama
pieces



- Evaluations – positive experience and powerful learning experience
 - for students and audience
- Student-led, authentic student views
 - drama can be an important way to express emotions

Visual expression of emotion evokes behaviour change

- intentionally experiential, audience influenced change thoughts and behaviour

Express difficult to verbalise concepts through narrative

- relatable concrete meaning

First MindPlay film: *The Black Dog*

- Positively rated
- Frequently used
- Set of activities
- Getting old (filmed in 2000)



- Scoping study: 2012
 - Desire for new films

Second MindPlay film: *Deep Breaths*



Theme: Resilience

Why is this film important?

- Dual purpose
 - exploring one way to teach to school students
 - explaining concepts appropriate for audience (pre-service teachers)

Resilience

important idea, can be difficult to conceptualise

Explores anxiety

most common mental illness (adolescents and adults)

Why is this film important?

- Added layer of complexity compared with filmed case studies, documentary, or lecture
 - Authenticity, adolescent-centred
 - Emotion to change behaviour
 - Unique
 - Engaging, distinctive, easier to process

Why is this film important?

- New films requested by lecturers
 - Film and activities distributed via USB and online
- Contact us to learn more about model of MindPlay and mental health promotion.

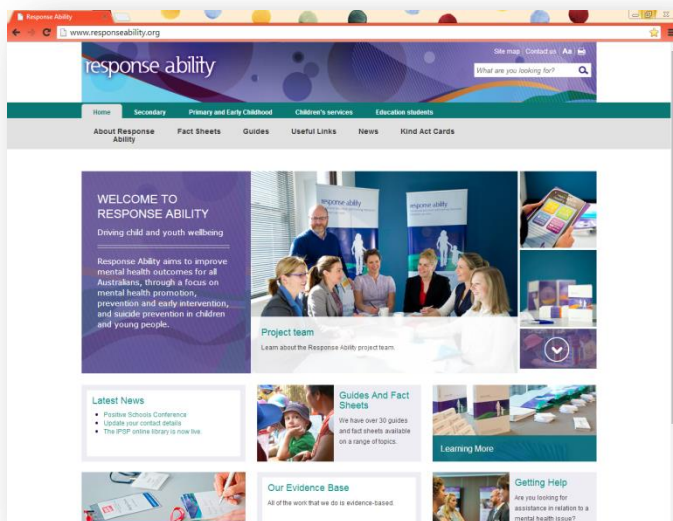


Response Ability Teacher Education initiative

HNELHD-education@hnehealth.nsw.gov.au

www.responseability.org

Hunter Institute of Mental Health (02) 49246900



Thank you

